

# OSISOFT ASIA TECHNOLOGY CONFERENCE 2007



Universal Platform, Infinite Possibilities

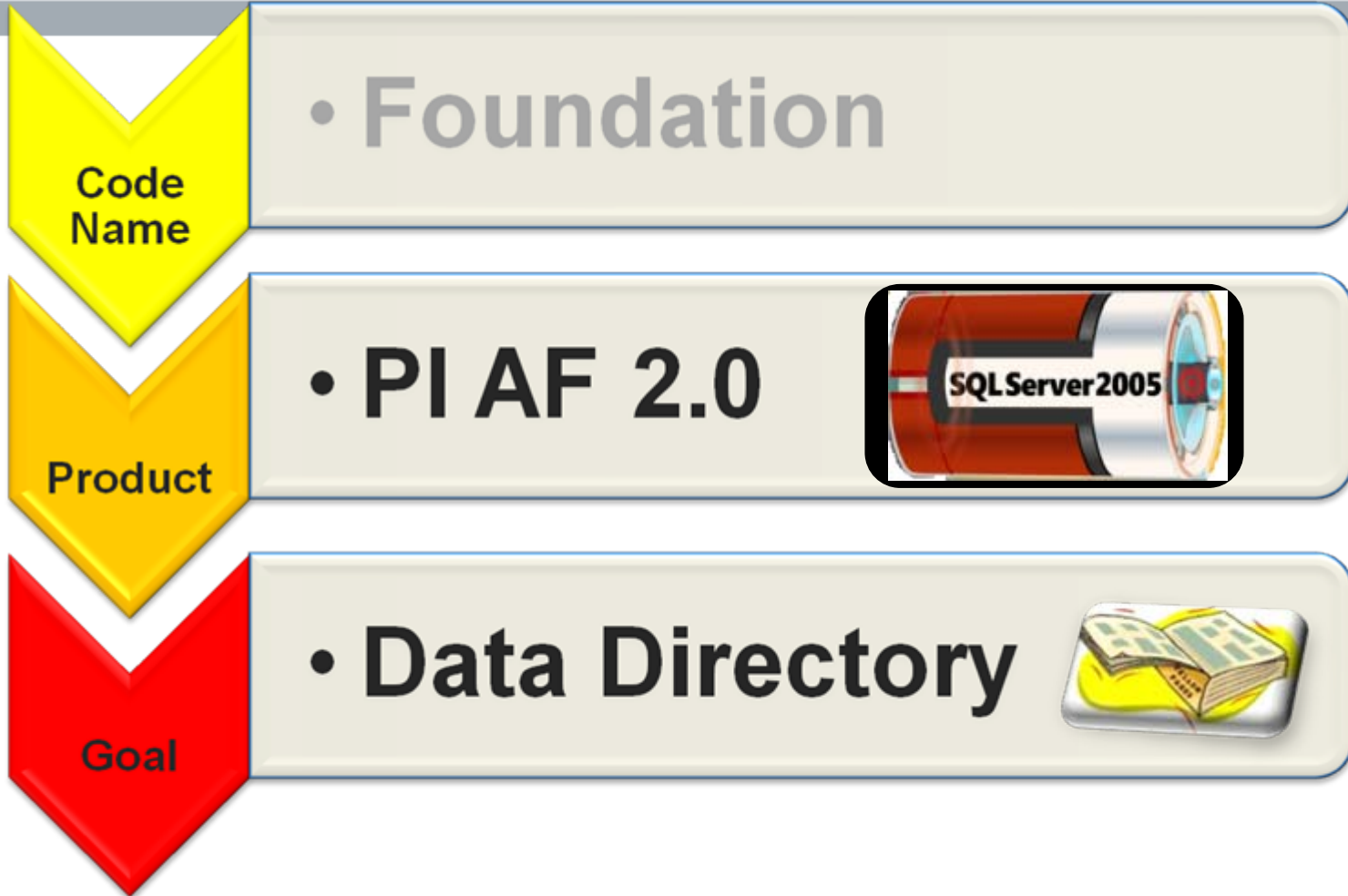
## How AF 2.0 Helps You Organize Your Information

Felicia Tan  
Service Engineer

# Agenda

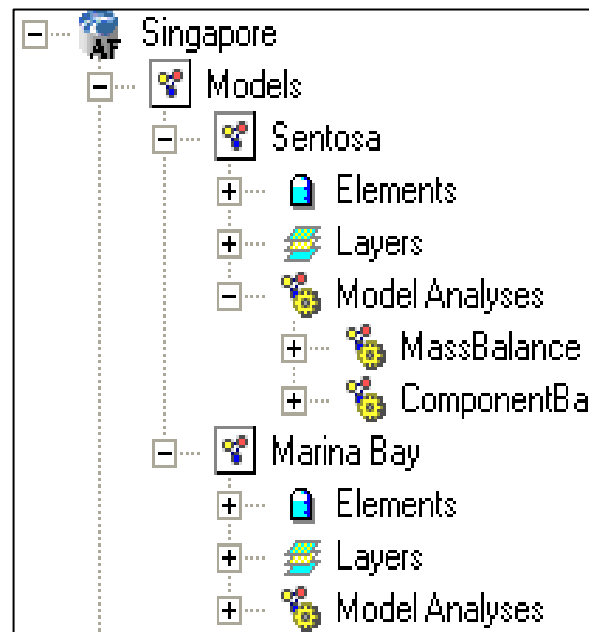
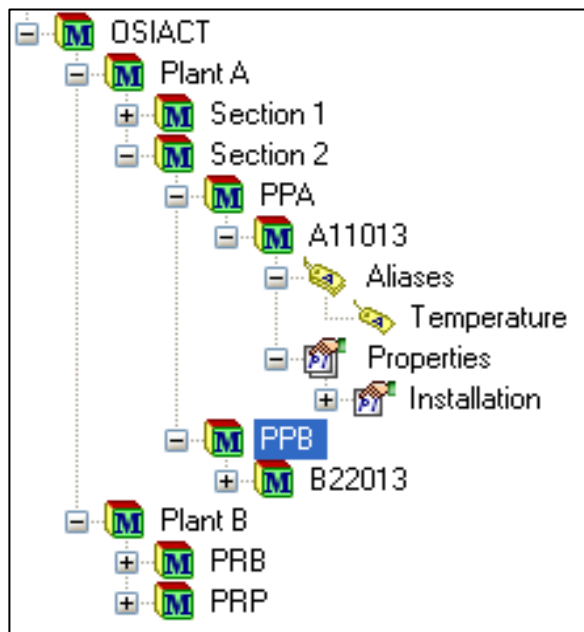
- What's AF 2.0?
- The value of AF
- Demonstrations
- Backwards compatibility
- Requirements

# Foundation by any other name



# What is AF 2.0?

The best of PI MDB and PI AF 1.x combined  
**... and a lot more!**



# The value of AF: structure

- PI is extremely good at:
  - Collect data from almost anywhere
  - Massive scalability, Highly available
- Flat points database
  - Organize your data
- Meta-data: a **structure** for the data
  - PI supplies data
  - AF supplies structure and access to more data

# Why add structure?

- Structure is ***your*** knowledge applied to ***your*** points
- Structure helps you:
  - Store your expertise about your process
  - Build applications
  - Build displays
  - Look for your answers

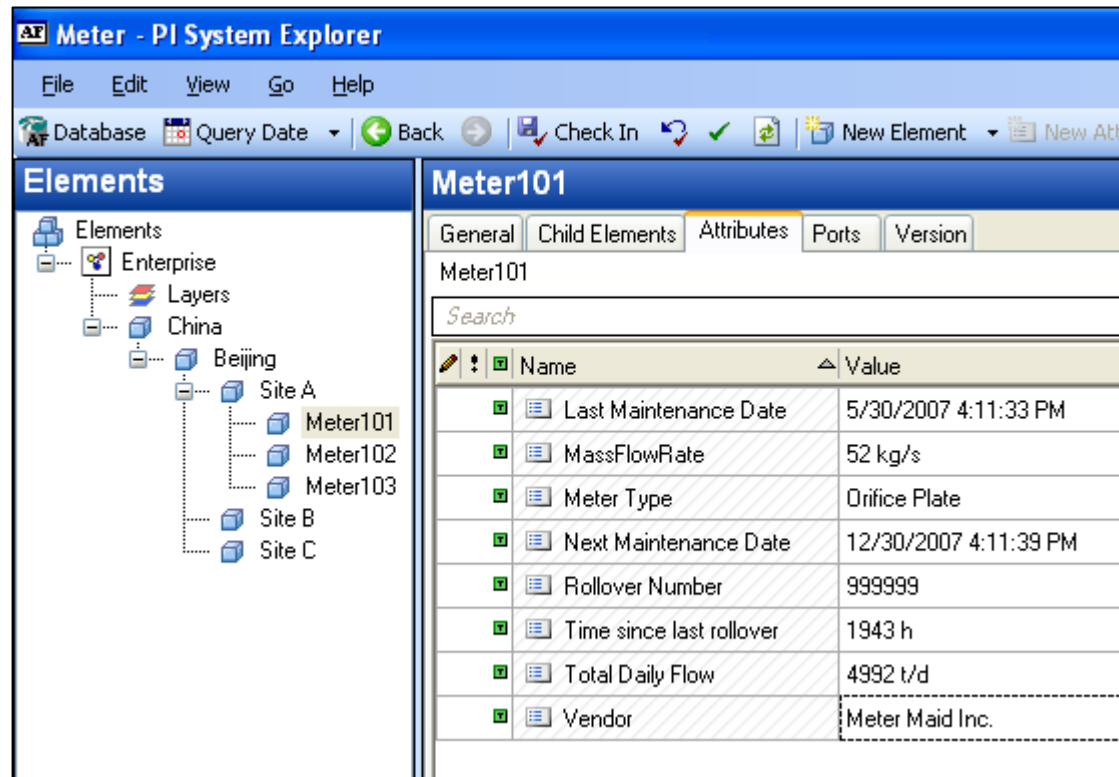
# AF shapes your data

AF is designed to store structure:

- Defining types of assets → Templates
- Associating points with assets → Elements
- Extra information about points → Attributes
- Physical/logical asset structure → Hierarchy
- Assets connectivity → Models
- Transactions → Transfers

# Area of Expertise

- Different type of equipment
- Calculations
- Limits



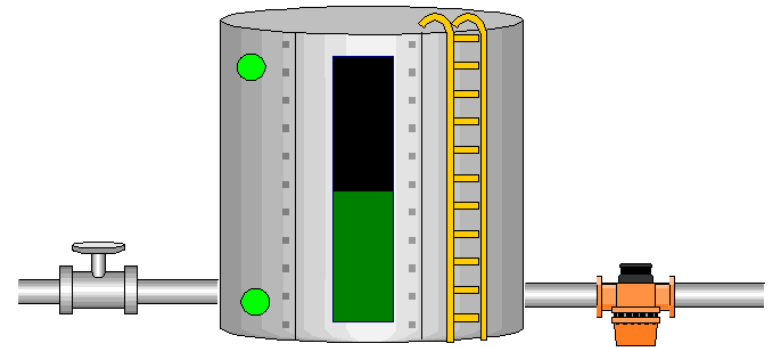
The screenshot displays the 'Meter - PI System Explorer' application. The left pane shows a hierarchical tree of elements: Enterprise > Layers > China > Beijing > Site A > Meter101. The right pane shows the 'Attributes' tab for 'Meter101', containing a table of key-value pairs.

Name	Value
Last Maintenance Date	5/30/2007 4:11:33 PM
MassFlowRate	52 kg/s
Meter Type	Orifice Plate
Next Maintenance Date	12/30/2007 4:11:39 PM
Rollover Number	999999
Time since last rollover	1943 h
Total Daily Flow	4992 t/d
Vendor	Meter Maid Inc.

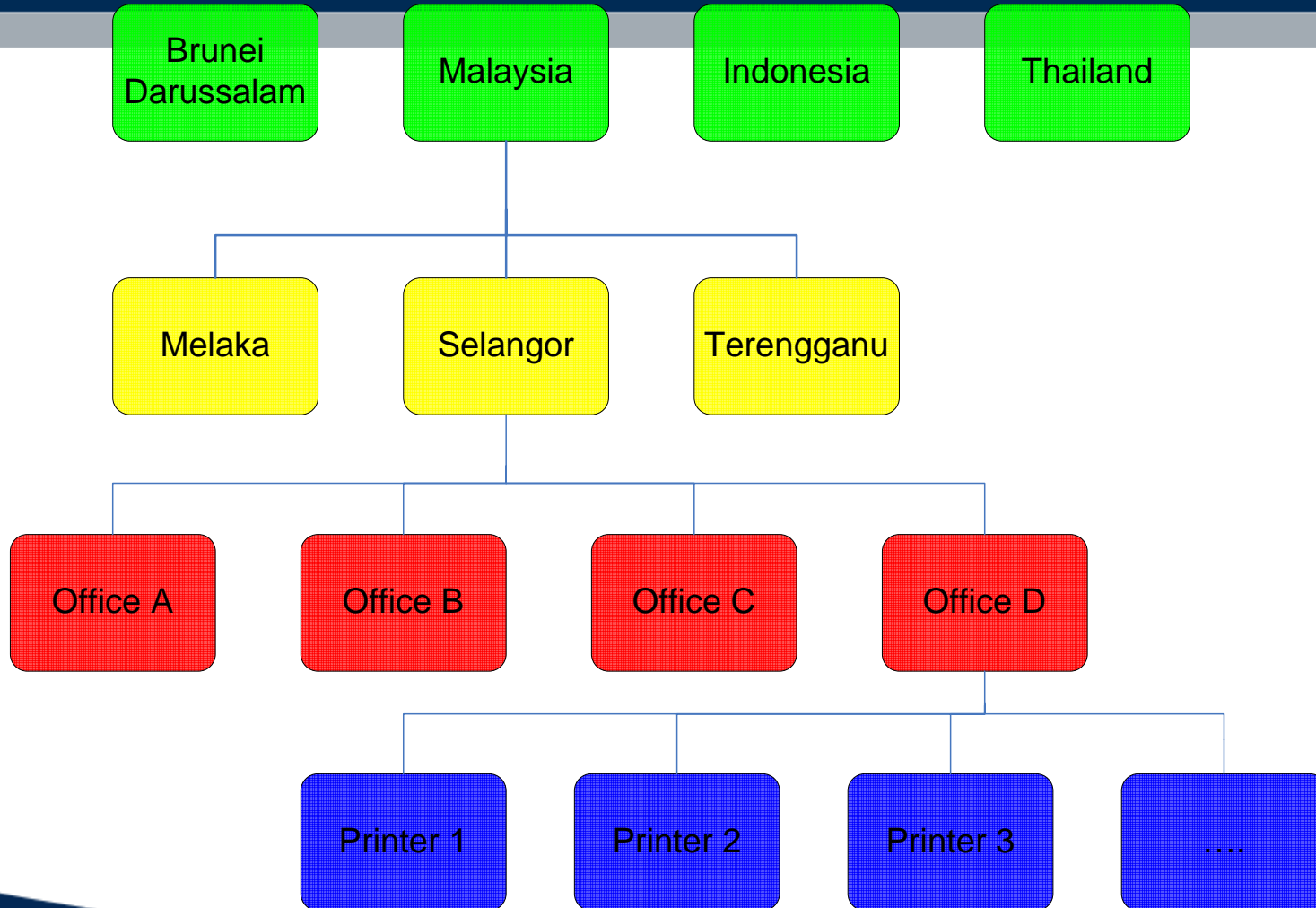


# Storing your Expertise

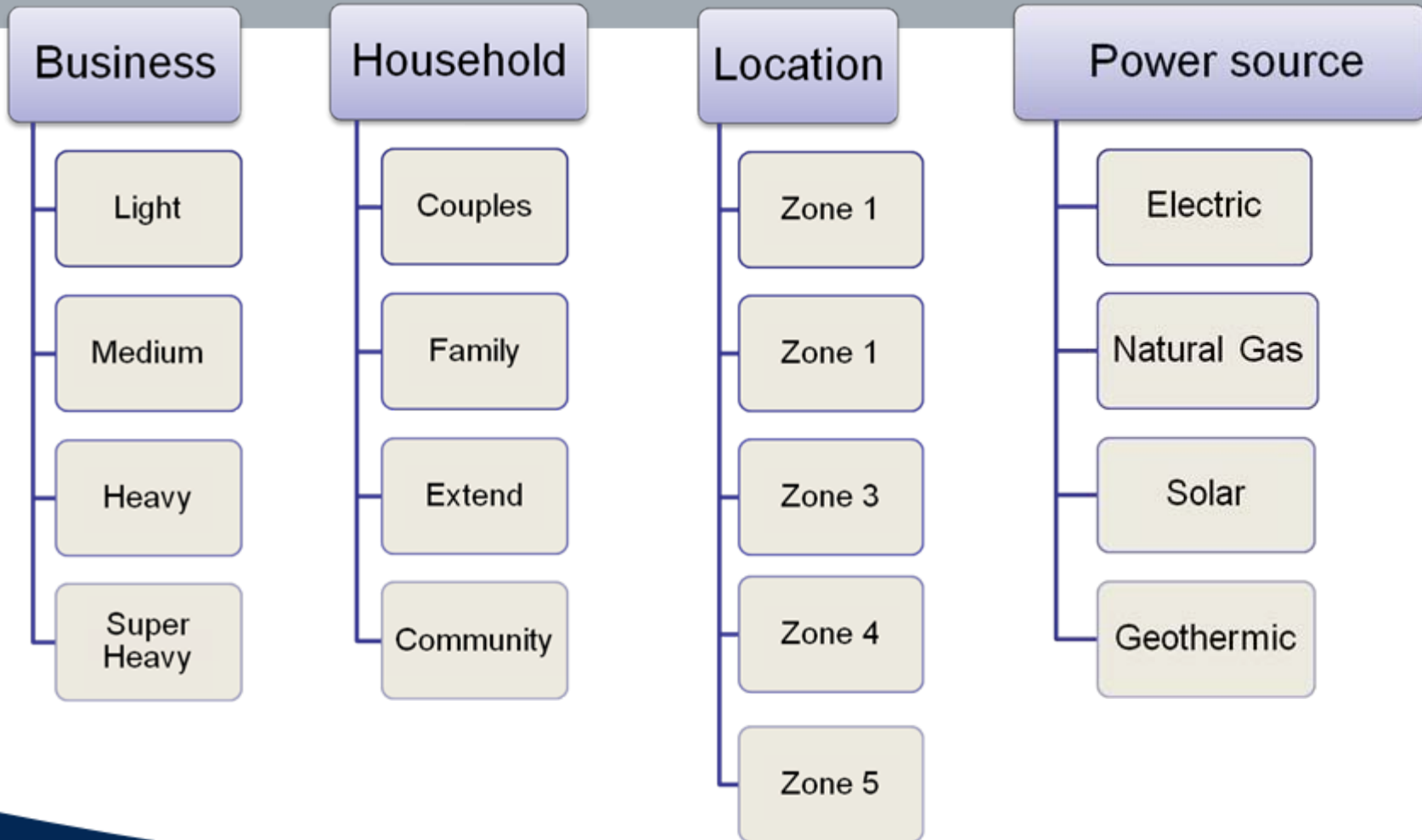
- How to totalize flow rates in/out of Tank
- Limits for notification on Tank
- Alarm states on Tank
- Strapping table
- Capacity of Tank
- Production line for Tank
- Downstream units of Tank
- Responsible person for production line



# Hierarchical view



# Categories



# DEMO

---

# Knowing Where to Look

- Adding your structure is done once
  - Organize points
  - Consistent naming
  - Static configured data
  - Data from other systems
- This structure benefits all PI users forever
  - Searches across PI systems
  - Search for information related to the business
  - Ability to view and use additional information

# Summary of new AF 2.0 features

- Improved element hierarchy
- Improved searching capabilities
- Object history (versioning, query dates)
- Hierarchical attributes
- New attributes types
- Enumeration sets
- Object level security integrated with Windows

# Applications – from OSI

- PI Notifications
  - Store Analysis and Notifications
  - Contacts
  - Use Element Attributes
- Assets connectors
- Event frames
- Configuration database

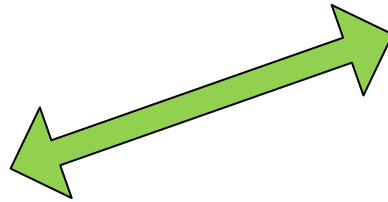
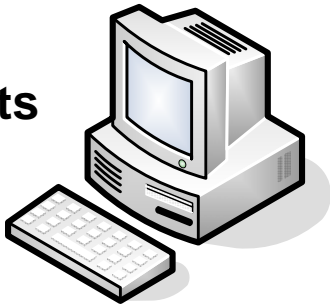
# The AF compatibility layer

- Redirect all AF 1.x clients towards AF 2.0
  - AF Explorer
  - AF Modeler for ProcessBook
  - AF Excel Add-ins
  - Custom DR, AR
- New AF 2.0 features not supported by old clients

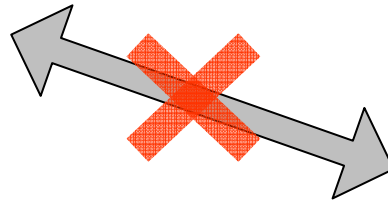
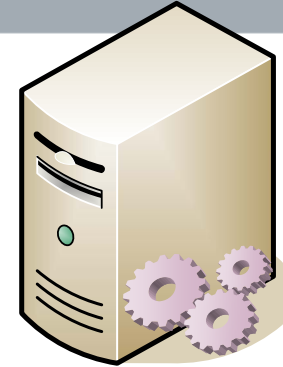


# No compatibility layer

AF Clients  
1.X



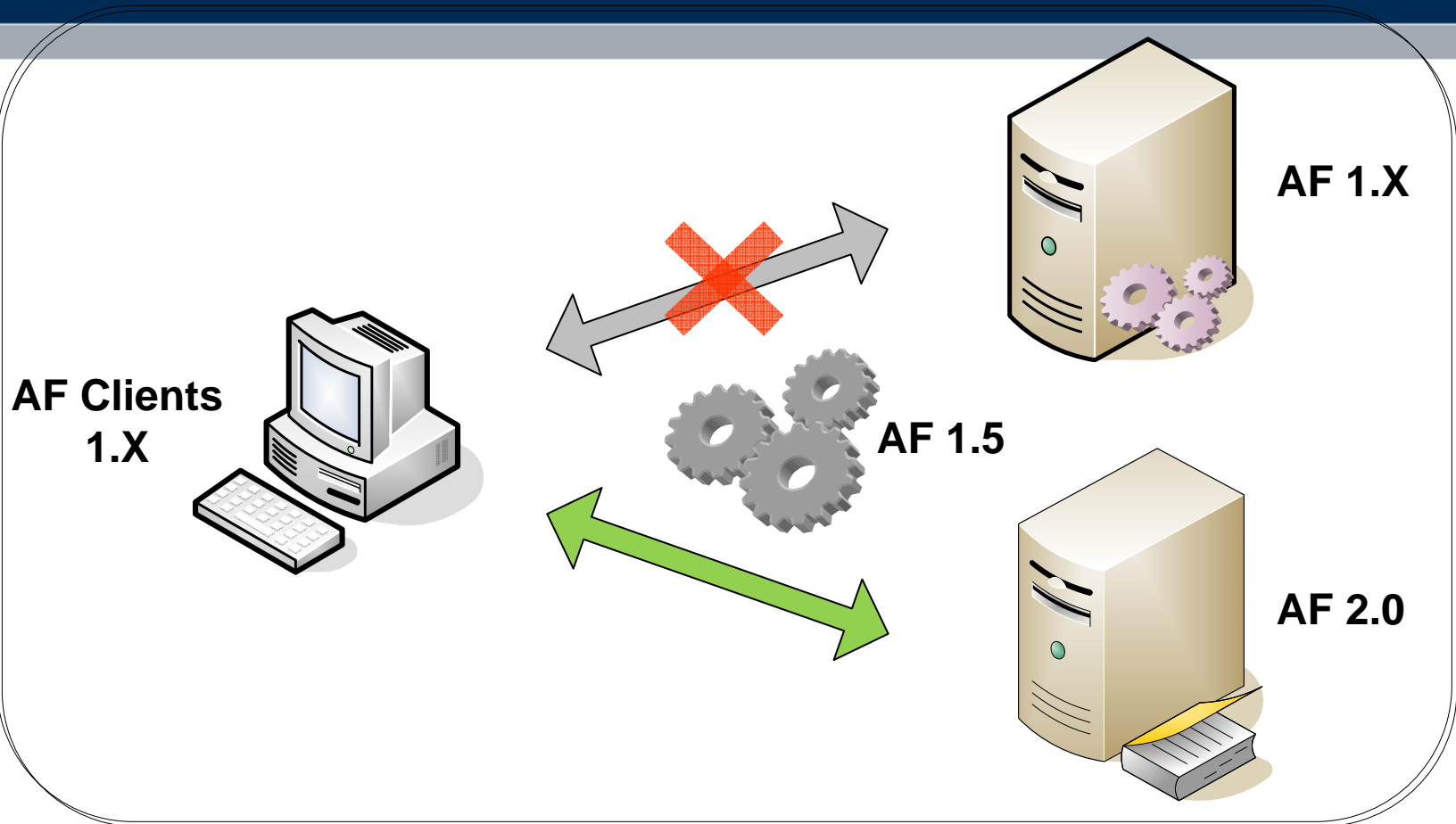
AF 1.X



AF 2.0



# With the AF 1.5 compatibility layer



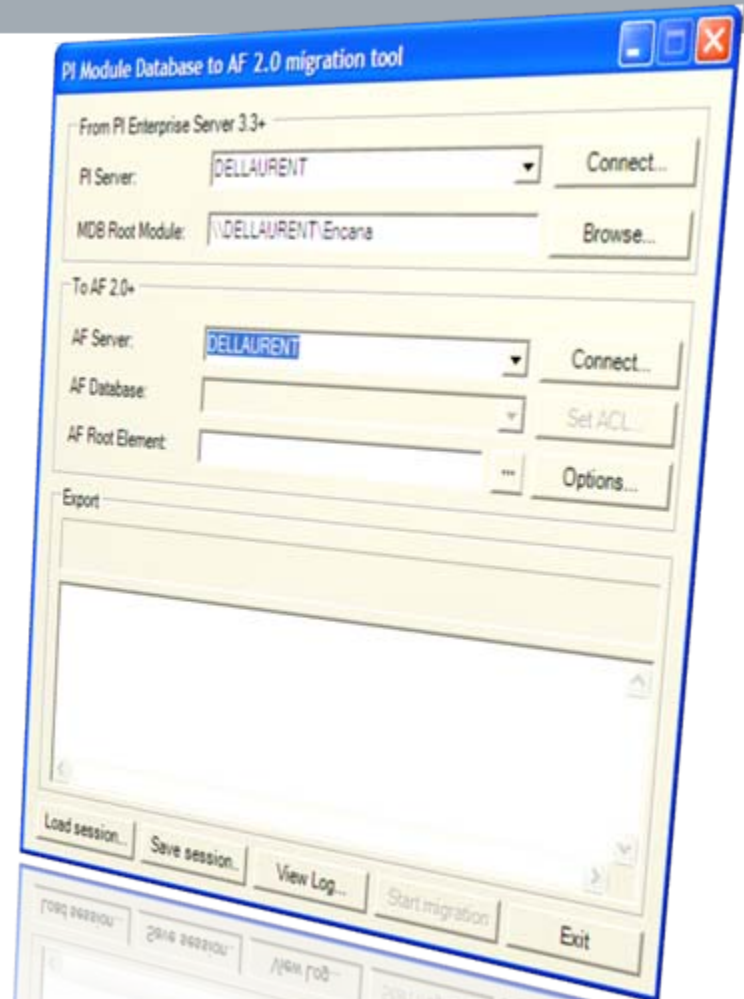
# AF upgrade utility

From AF 1.x  
To AF 2.0



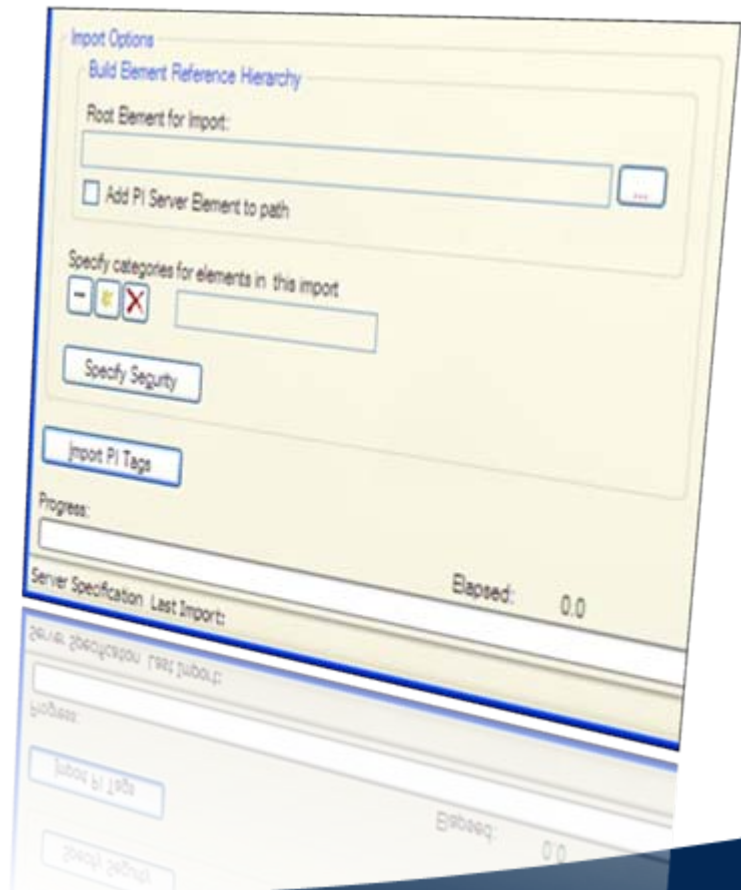
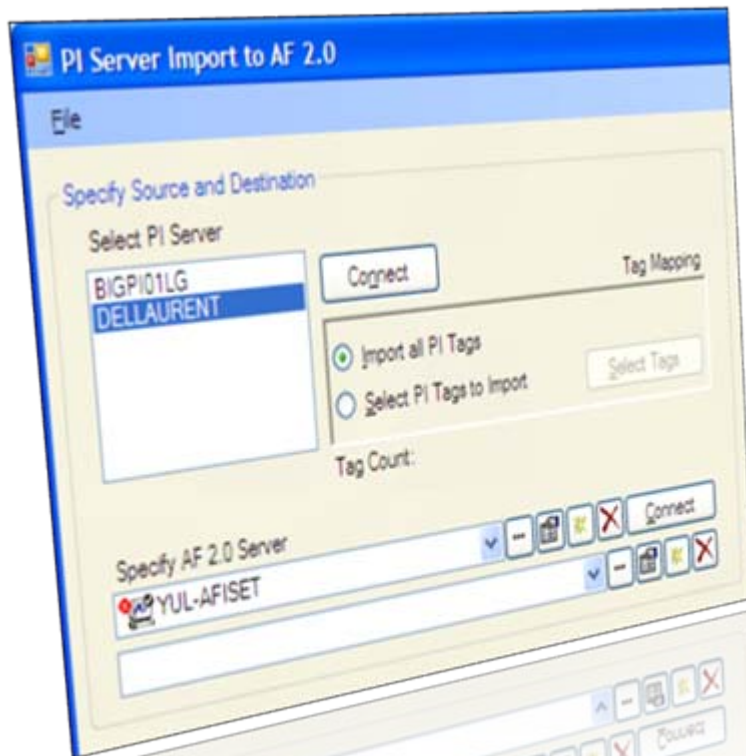
# Migration from PI MDB

**From PI MDB  
To AF 2.0**



# Getting started with AF 2.0

## The PIServerImport utility



# Requirements

- SQL Server 2005 or SQL Server Express 2005
- PI Server 3.2.354.0 or more recent
- Microsoft .NET Framework 3.0
- Operating System must be Windows XP or greater